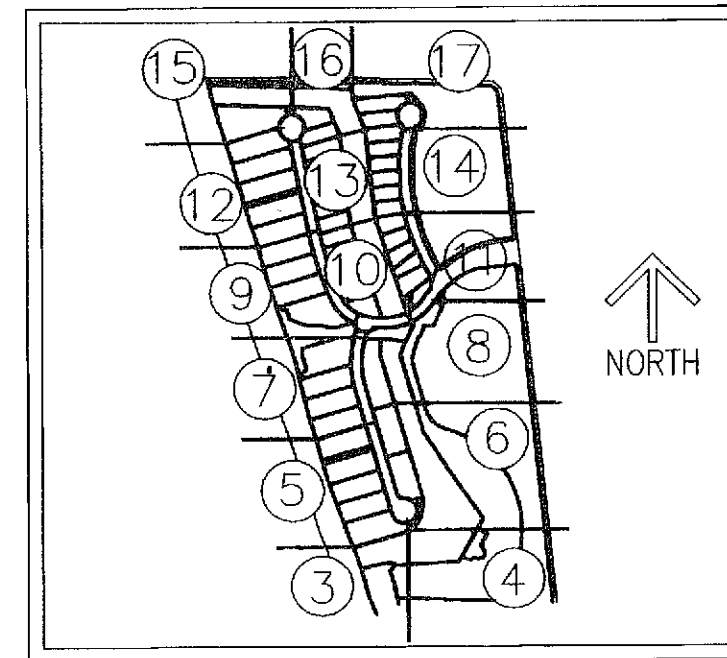


PARCEL 32, P.U.D.

A PLANNED UNIT DEVELOPMENT
 BEING A PLAT OF A PORTION OF THE NORTHEAST ONE-QUARTER OF
 SECTION 29, TOWNSHIP 41 SOUTH, RANGE 43 EAST,
 PALM BEACH COUNTY, FLORIDA

THIS INSTRUMENT PREPARED BY
 DAVID P. LINDLEY
 OF
CAULFIELD and WHEELER, INC.
 SURVEYORS - ENGINEERS - PLANNERS
 7301-A WEST PALMETTO PARK ROAD, SUITE 100A
 BOCA RATON, FLORIDA 33433 - (561)392-1991
 JANUARY - 2010



SHEET INDEX
 NOT TO SCALE

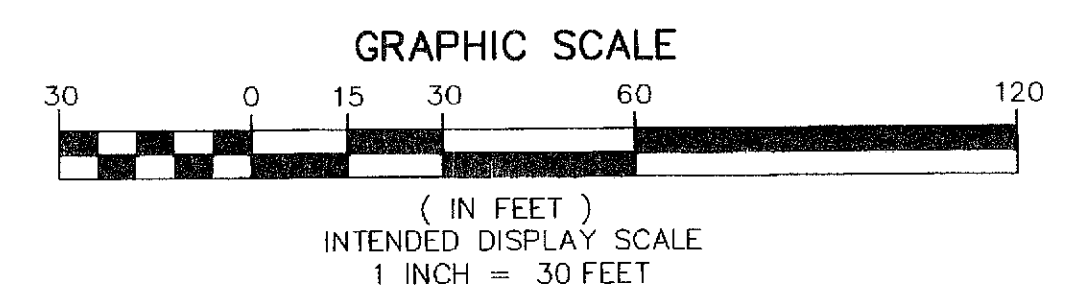
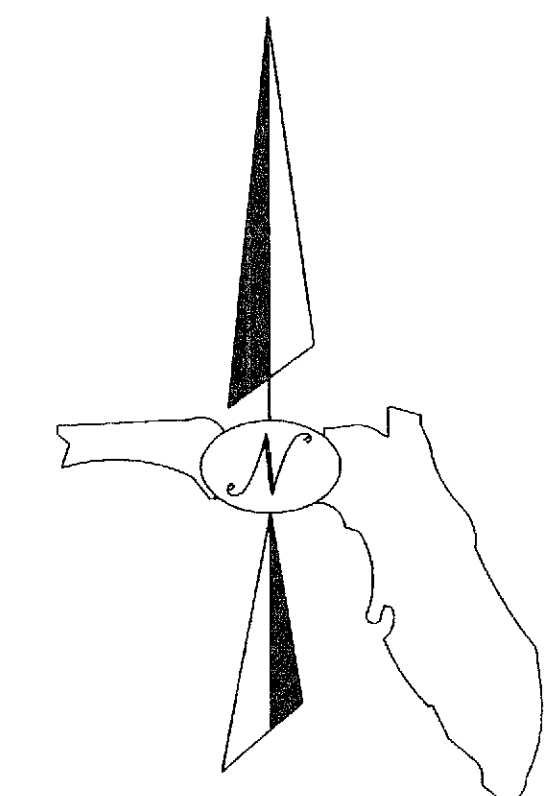
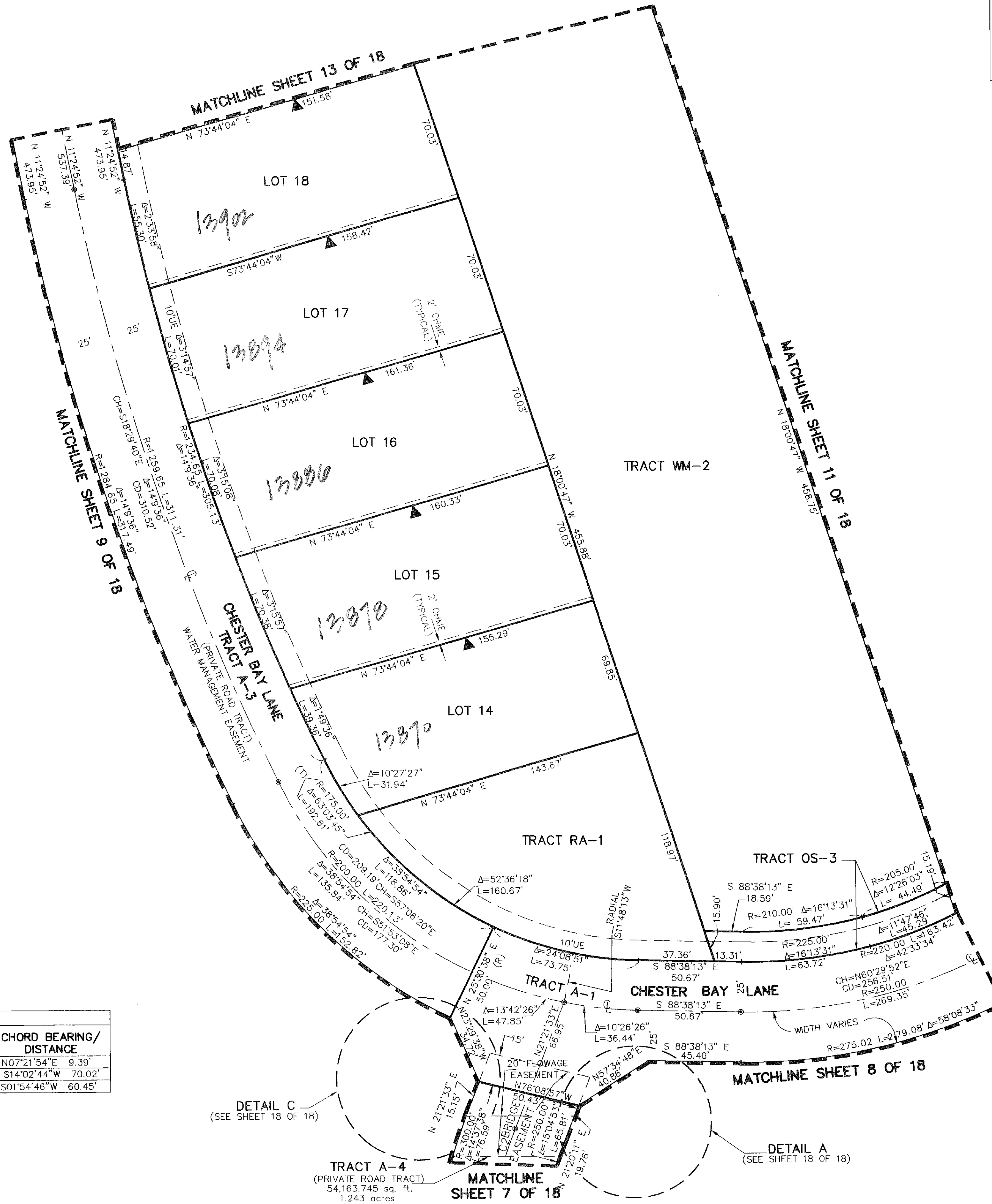
89

STATE OF FLORIDA
 COUNTY OF PALM BEACH
 THIS PLAT WAS FILED FOR
 RECORD AT _____ M.
 THIS _____ DAY OF _____
 A.D. 20____ AND DULY RECORDED
 IN PLAT BOOK _____ ON
 PAGES _____ AND _____

SHARON R. BOCK
 CLERK AND COMPTROLLER

BY: _____
 DEPUTY CLERK

SHEET 10 OF 18



| CURVE TABLE | | | | |
|-------------|---------|---------------|--------------|------------------------|
| CURVE | RADIUS | CENTRAL ANGLE | CURVE LENGTH | CHORD BEARING/DISTANCE |
| C1 | 425.00' | 1°15'59" | 9.39' | N07°21'54"E 9.39' |
| C2 | 275.00' | 14°37'38" | 70.21' | S14°02'44"W 70.02' |
| C3 | 525.00' | 6°36'05" | 60.49' | S01°54'46"W 60.45' |

NOTE:
 PRESERVATION TRACTS 1, 2, 3, 4, 5 AND 6 AS SHOWN HEREON, ARE HEREBY DEDICATED TO NORTHERN PALM BEACH COUNTY IMPROVEMENT DISTRICT (NPBCID), ITS SUCCESSORS AND ASSIGNS, FOR CONSERVATION AREAS AND IS THE PERPETUAL MAINTENANCE OBLIGATION OF SAID NPBCID, ITS SUCCESSORS AND ASSIGNS, WITHOUT RECOURSE TO PALM BEACH COUNTY, AS PER ARTICLE 14.C, OF THE PALM BEACH COUNTY LAND DEVELOPMENT CODE, THE TRACTS ARE SUBJECT TO A CONSERVATION EASEMENT RECORDED IN OFFICIAL RECORDS BOOK 20471, PAGES 1690 THROUGH 1744 OF THE PUBLIC RECORDS OF PALM BEACH COUNTY, FLORIDA.